

.tracce.

Tracce investigates contemporaneity.
Tracks expands its conversations to all fields.
Traces likes to question.
Traces aims to compare different points of view.
Tracce establishes connections (or frictions).
Traces tries to give a lateral reading.
Traces looks at conventions. And it intends to provoke them.

| traccìa |

02

Federico Rossi + Francesca Gagliardi | Fondamenta I (architects)

Angela Rui (curator)

Simone Bossi (photographer)

in conversation about

Data (matters)

Decoding / Translating / Connecting

The surreal Moment

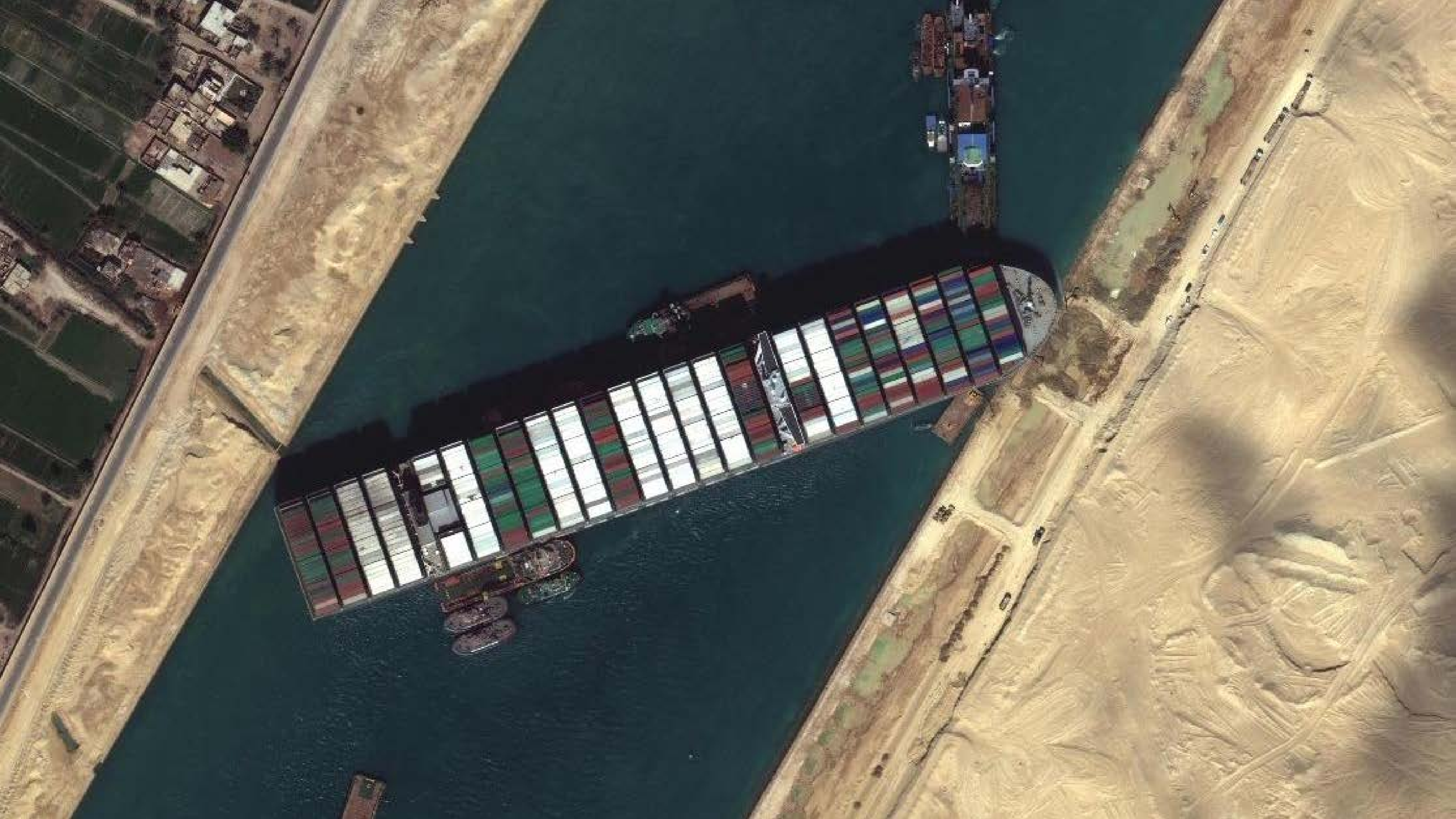
The Evergreen cargo ship stuck in the Suez Canal has become a symbolic image of a society where goods still move too much compared to data. Yet about 2.5 quintillion bytes are created every day, and our lives depend more and more on the digital world.

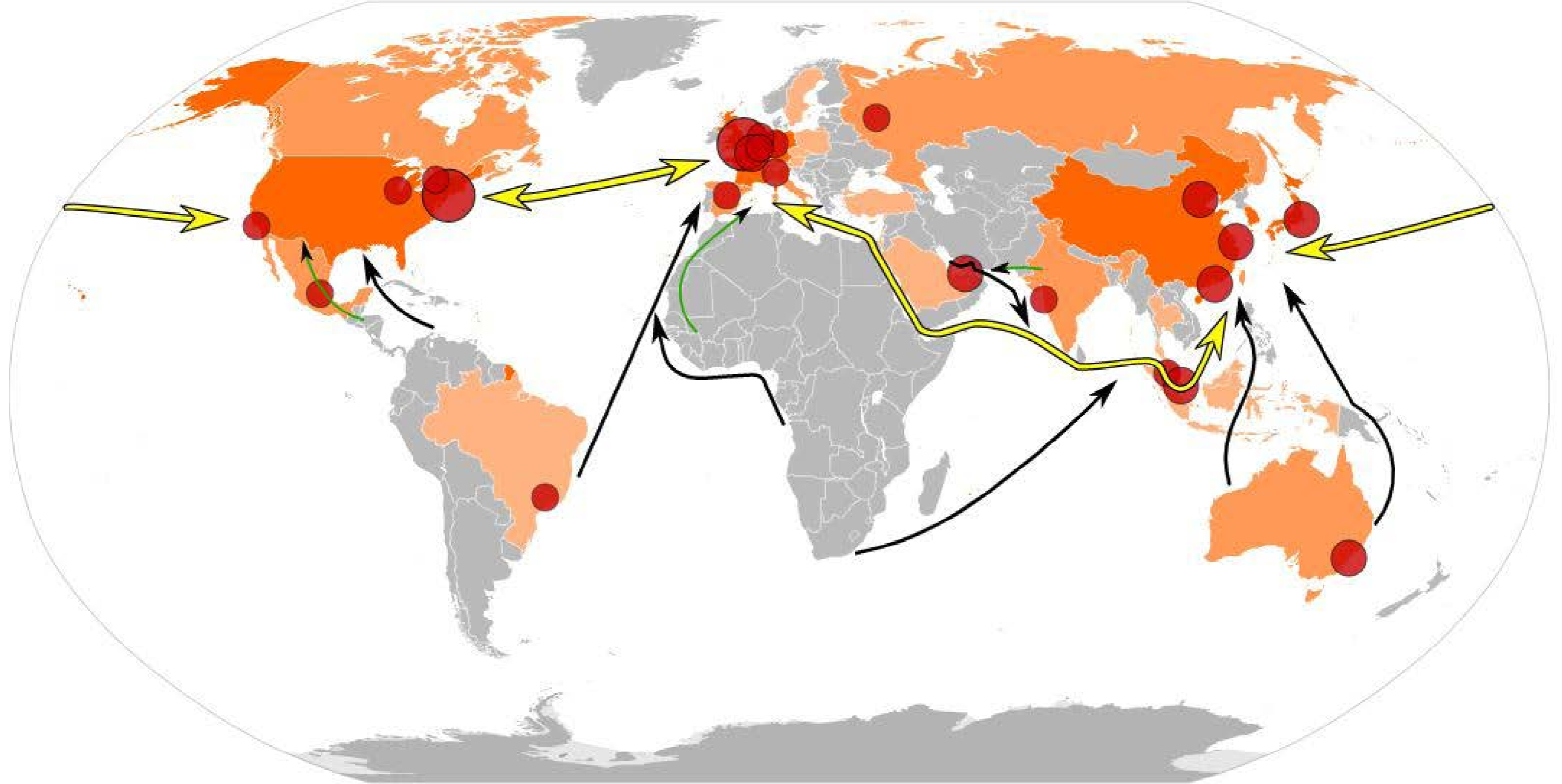
What are the material and spatial consequences of data production and consumption?

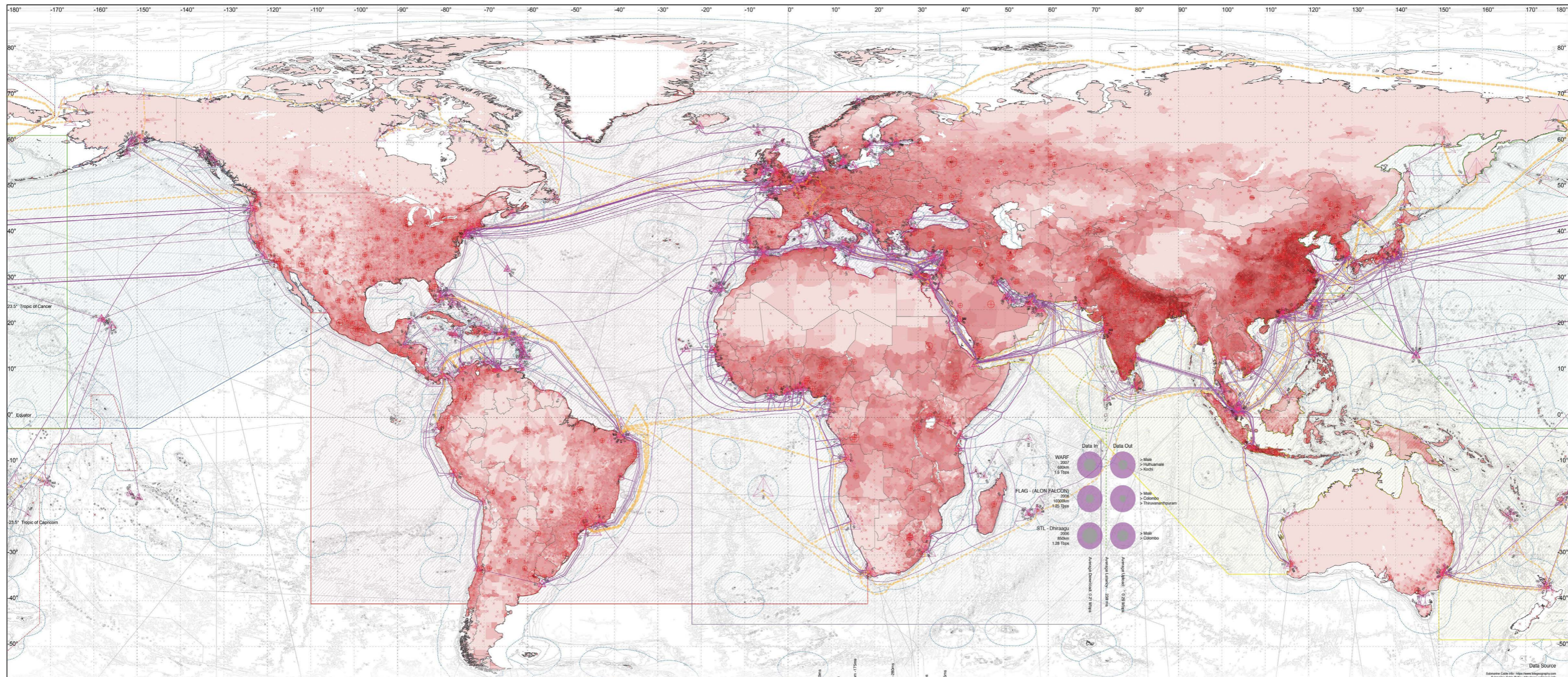
Can virtual places replace physical ones?

Design must become the translator and interpreter of a world made up of bits, but the data itself is the tool of design. How do you laterally look at this information, decoded and mapped according to scientific rules, to reconstruct a complex message that can produce culture, rather than a simplification?

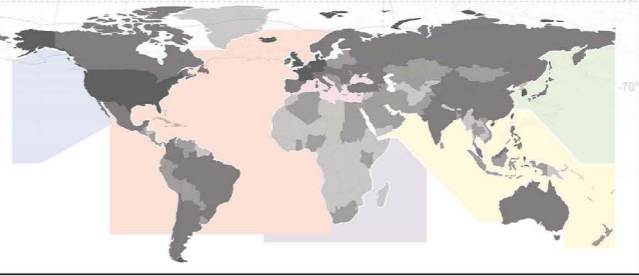
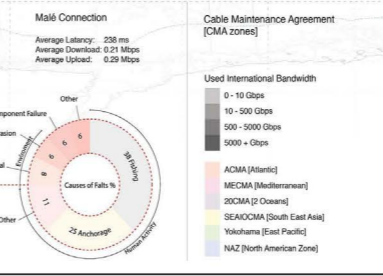
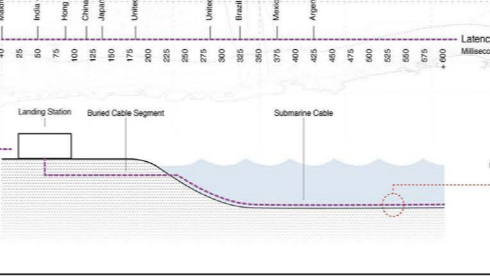
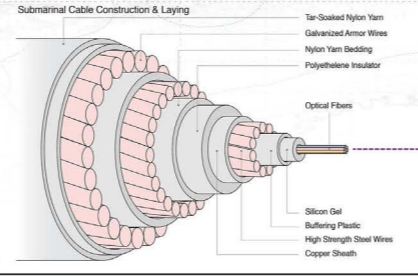
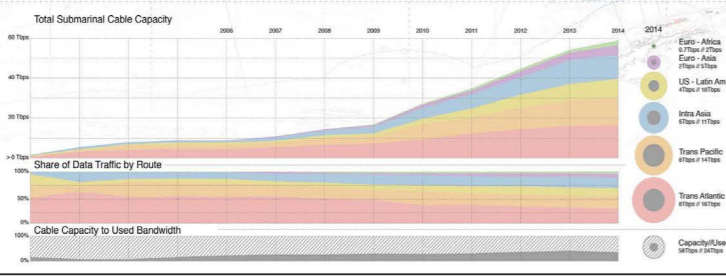
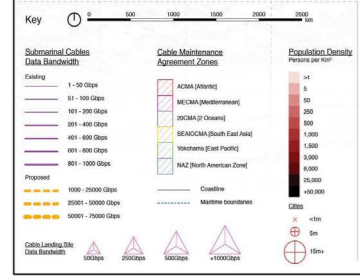
In this context, (how) do we still interrogate ourselves about beauty? Does this become an “analogic” gaze that produces nostalgic effects, a technical virtuosity that challenges the impossible or an element of the unconscious?





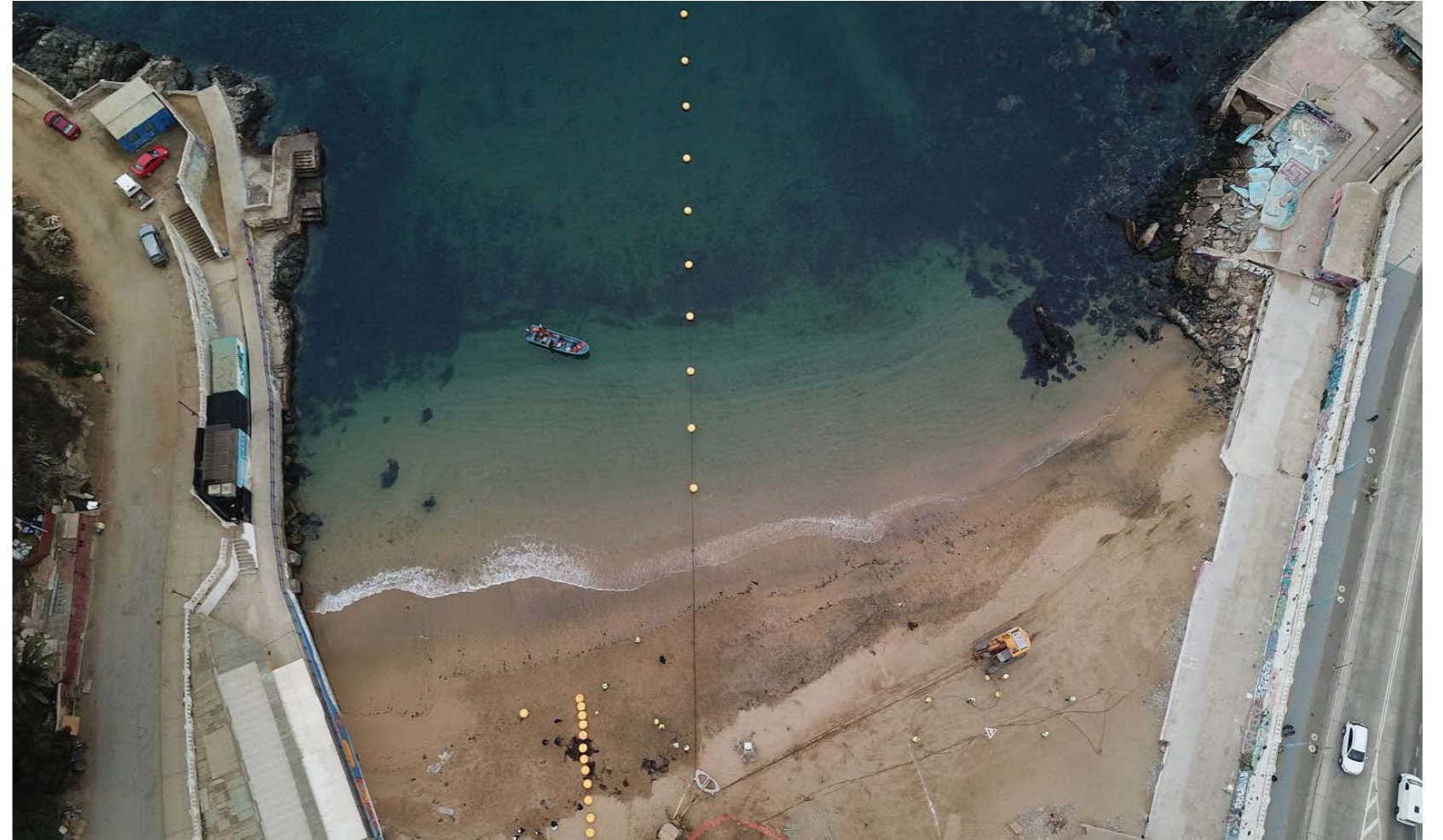


DATA FLOW // SUBMARINE CABLE NETWORK // 2015

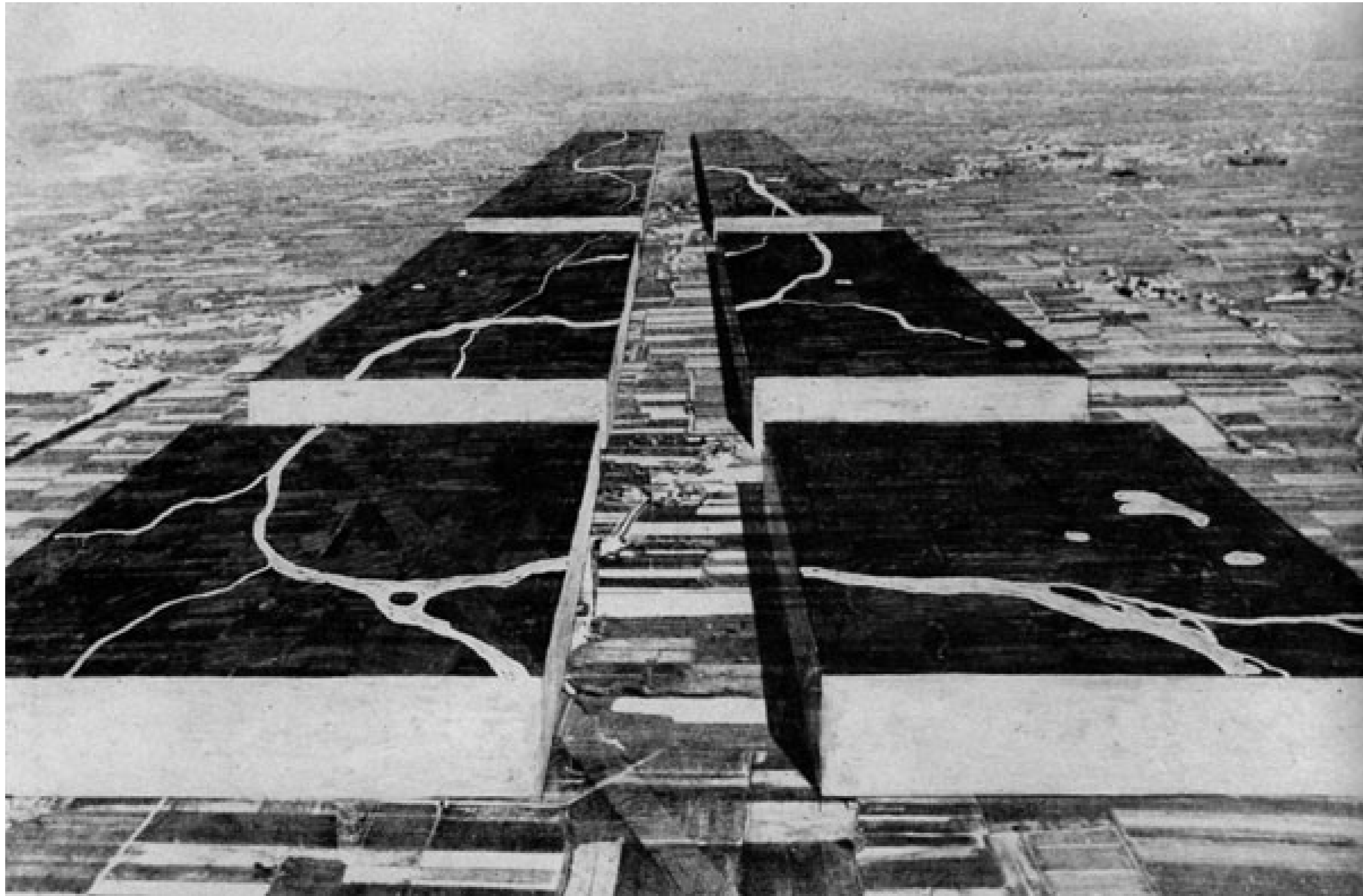


Data Source: Submarine Cable Info: <http://www.submarinecableinfo.com/>
Population Density: <http://data.cia.gov/data/docs/2009/09-01-population-density.html>
Mail Connection Data: <http://www.broadband.com/mail-connection/>









© ARCHIZOOM



1984

BIG BROTHER
IS WATCHING
YOU



ciutat de Barcelona



Come può il design individuare un modo di collaborare con la scienza diverso da quello del totale abbandono al dato?

Attraverso una visione olistica che prevede un'inclusività di voci diverse, ci si può inserire in una governance che ha a che fare con la costruzione e con la produzione.

Il design traduce concetti di cui si deve fare anche garante, che deve studiare ed esprimere in una forma più accessibile, non solo per le piattaforme scientifiche, ma anche per quelle culturali.

Il design può mostrare la complessità sotto forme che possono creare consapevolezza e conoscenza, con una capacità di mediazione e di traduzione che è propria della disciplina - che sente l'urgenza di costruire questo mondo e non solo di rappresentarlo.



alice.rawsthorn 



FORMAFANTASMA

STUDIO WORKS UPCOMING

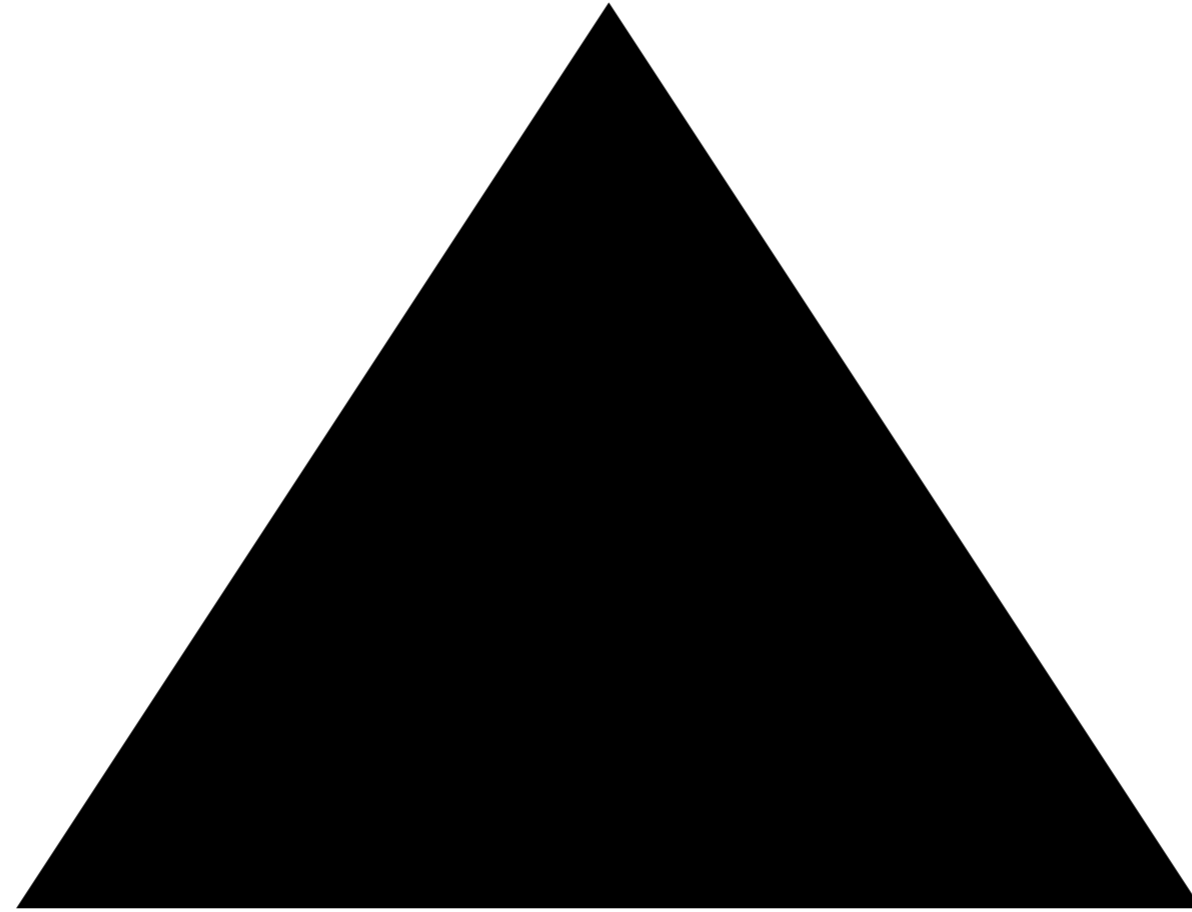
This website has been designed to minimise the energy consumption and CO2 emissions that result from navigating the internet. To know more about this [click here](#).



Liked by **sofiapia3** and **others**

alice.rawsthorn Design and Hope - 9. A prime cause of environmental damage that is hiding in plain sight is our personal use of digital communications.

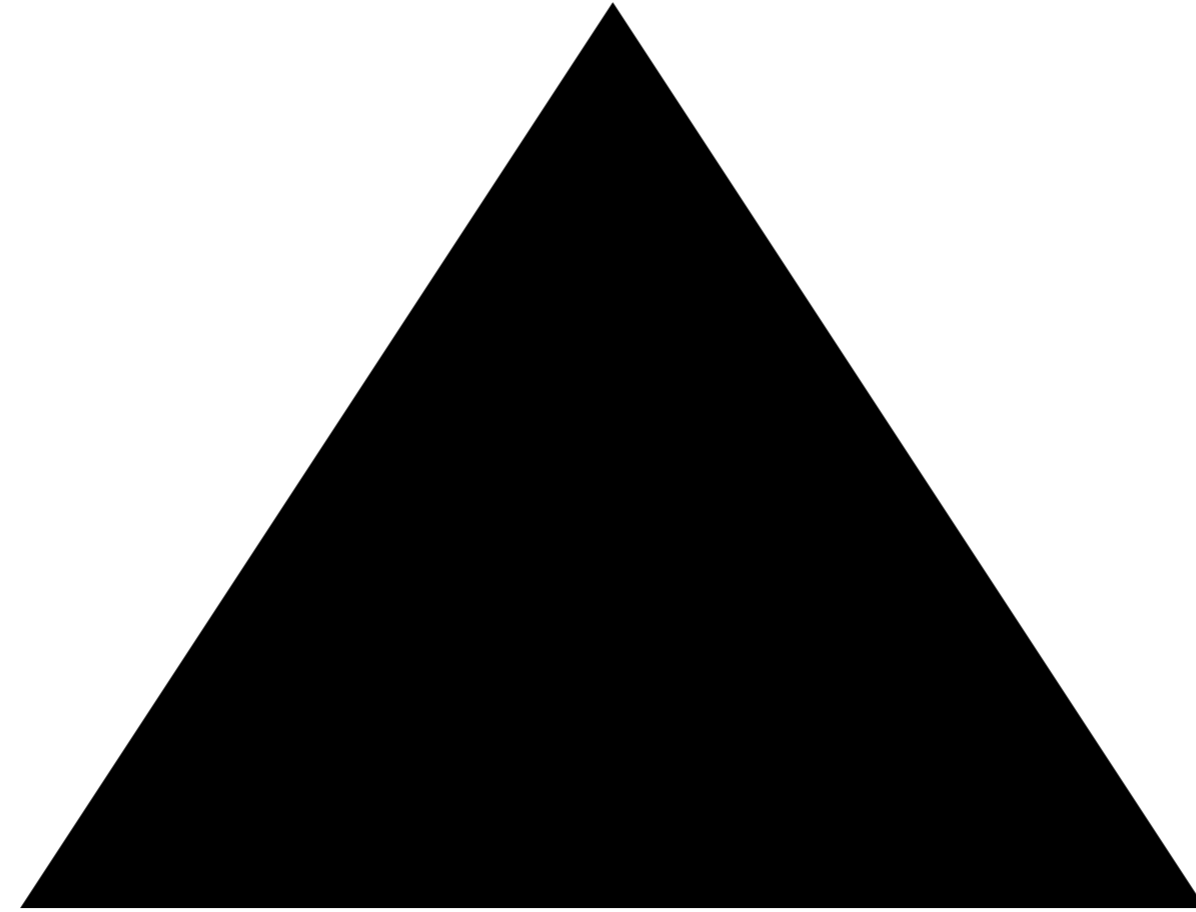
FIRMITAS



UTILITAS

VENUSTAS

INTERDEPENDENCY

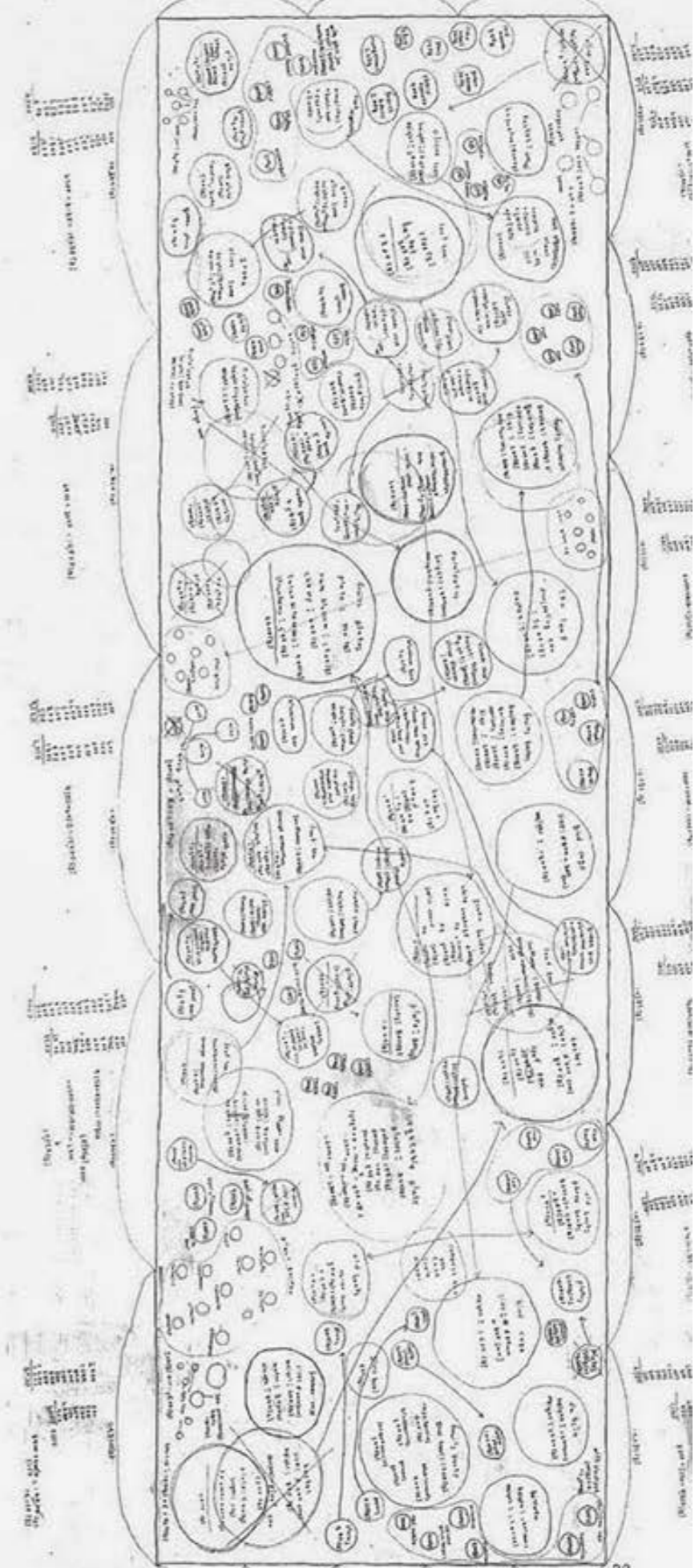
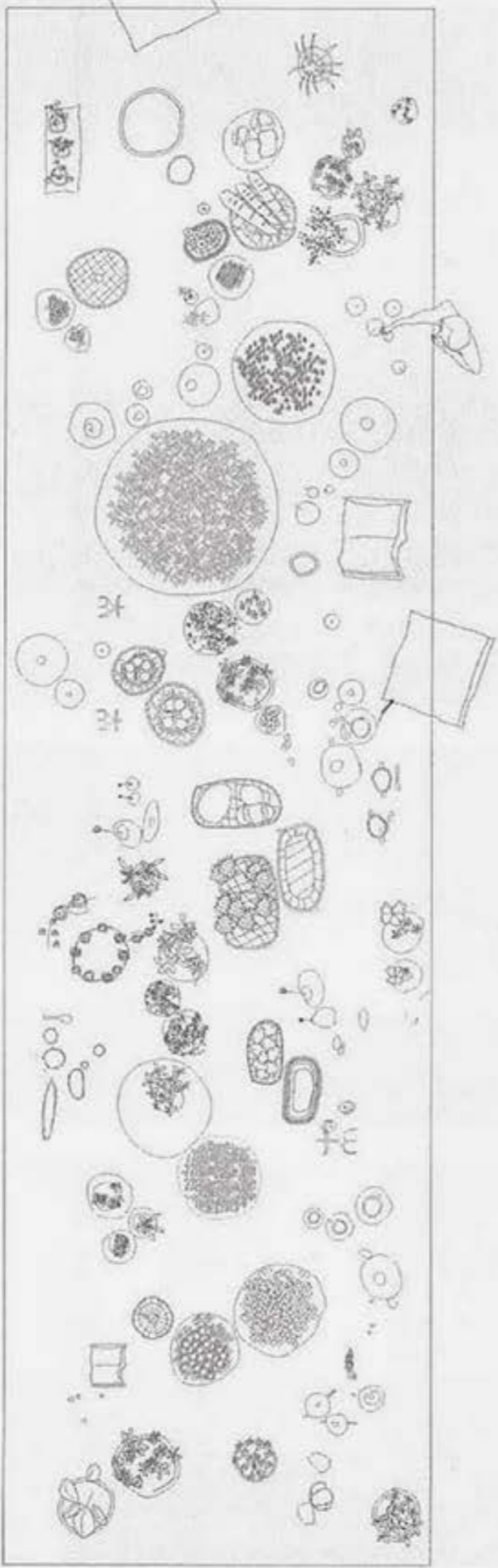
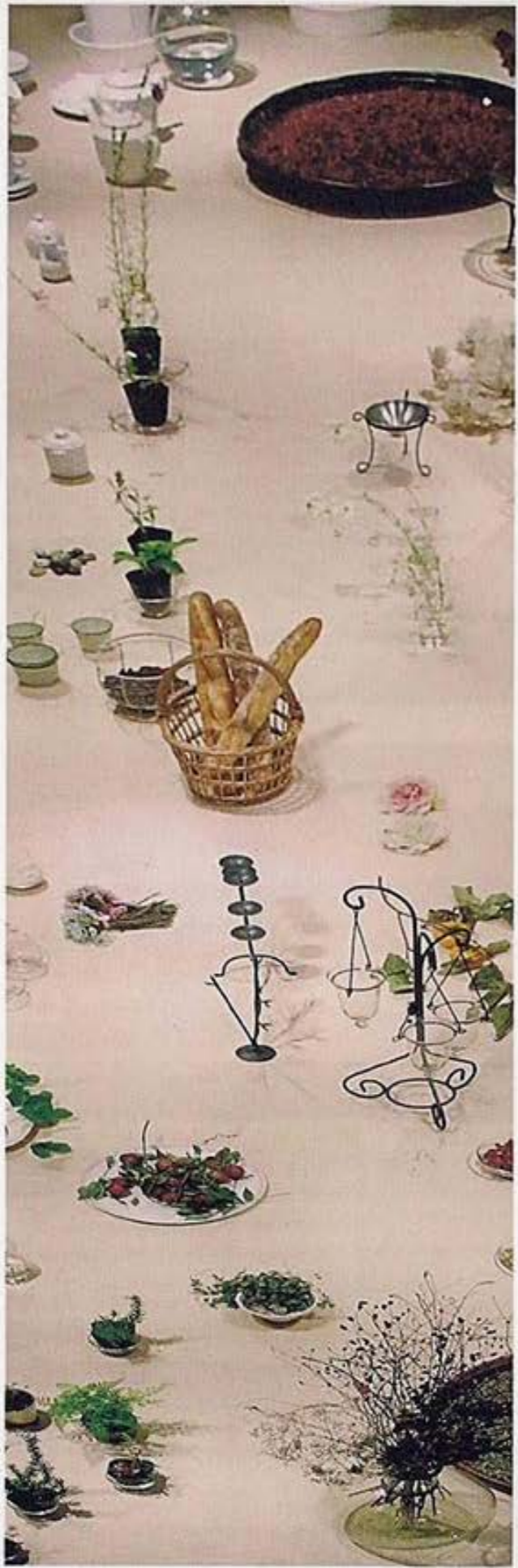


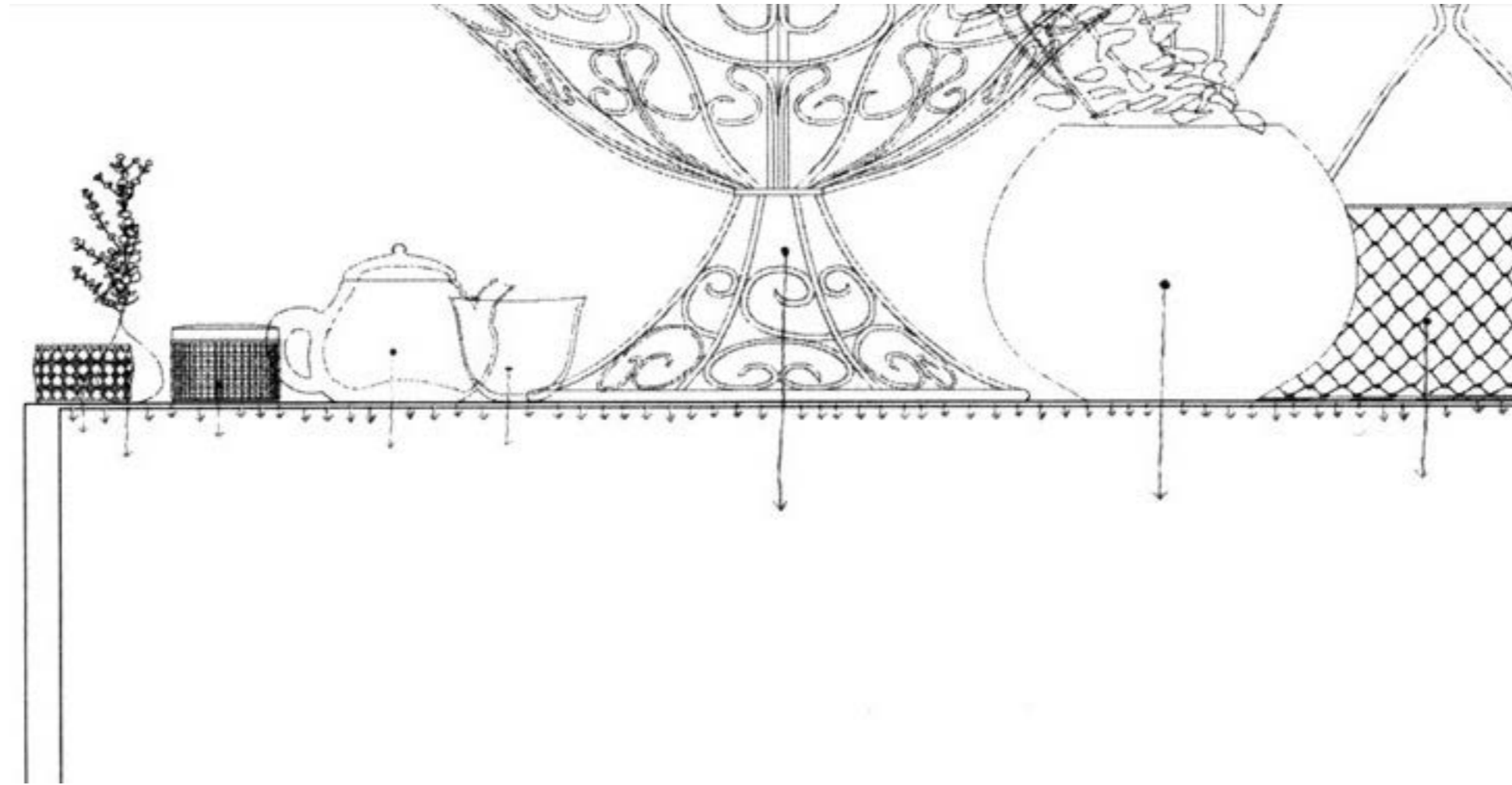
**HYPER
CONNECTIVITY**

CUSTOMIZABILITY



© YUNIA ISHIGAMI





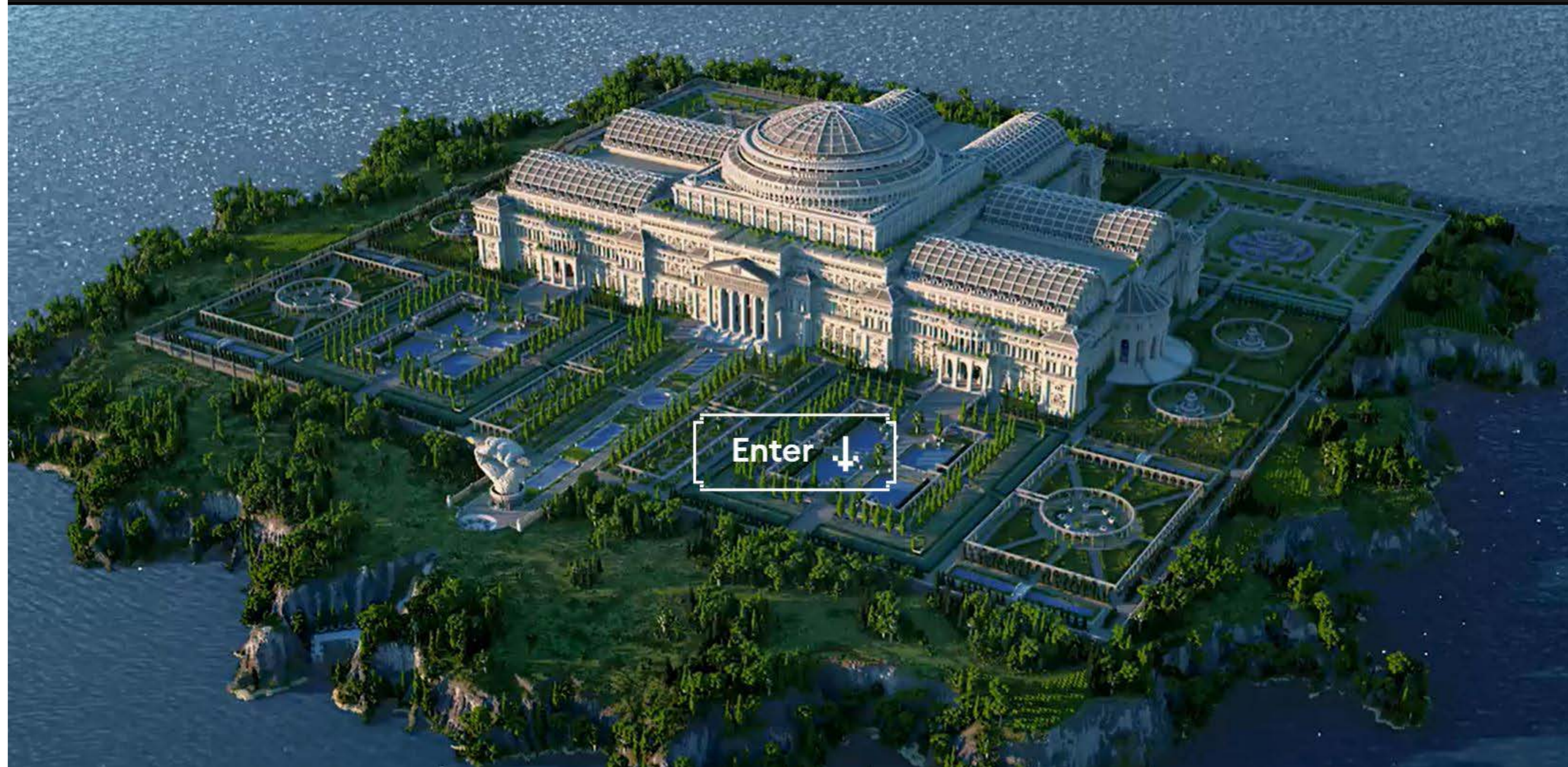




© THE MATRIX

02 About the Project

THE ~~UNCENSORED~~ LIBRARY



studio
.traccia.